

# WHEEL WORK BENCH

## 1811-L



THE SMART SOLUTION FOR  
PROFESSIONAL WORK.

STRONG.  
INGENIOUS.  
RELIABLE.





# WHEEL WORK BENCH

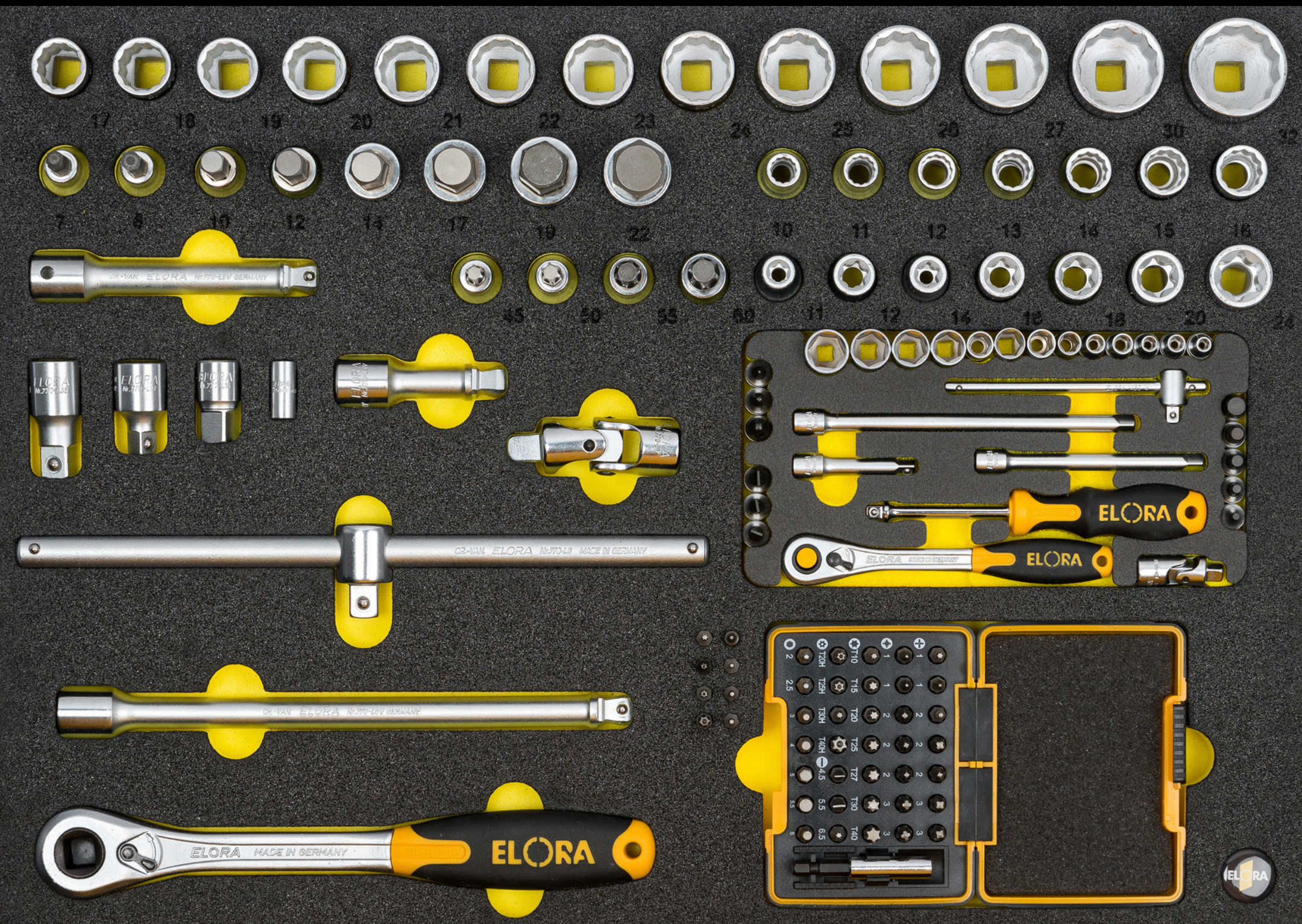
## 1811-L



- 7 ball-bearing drawers, each with 45 kg load capacity and full extension
- 450 kg total static load capacity
- Door side with one shelf
- Individual drawer locking across the entire runner for practical one-handed operation
- Anti-tilt protection by preventing drawers from opening at the same time
- Wide-track chassis with 4 Ø 125 mm solid rubber smooth-running wheels, 2 braked swivel wheels with double stop
- PS (polystyrene) shelf, solvent-resistant, with integrated, practical storage compartments



# WIDE SELECTION OF SUITABLE OMS AND WS MODULES





ELORA  
MADE IN  
GERMANY  
[www.elora.de](http://www.elora.de)

KRAFTWERK











